

FY 2010 Accomplishments

Robotics, Electronics, Software and Advanced Sensor Circuits



R&D Laboratory
Seaside Building F6/F9

SPAWAR Mentor Protégé Program
Mentor: Applied Research Associates
Innovative Design and Rapid Prototype



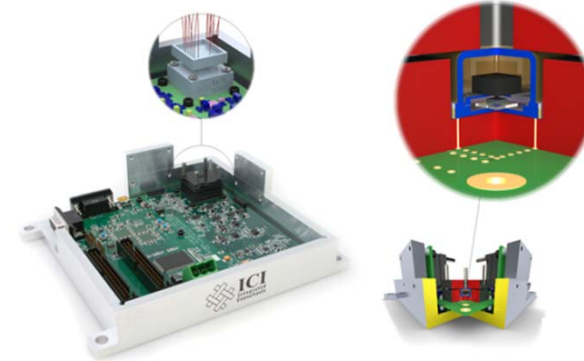
2010 Nunn-Perry Awardee

Overview

SSC Pacific Robotics
Retrotraverse



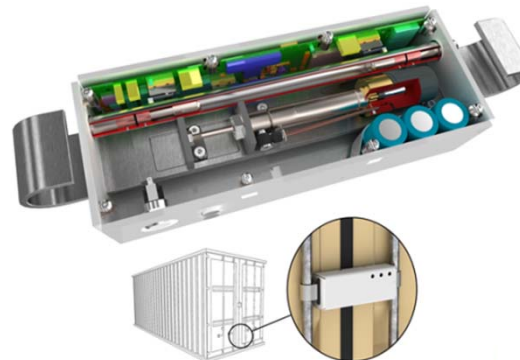
Advanced Integrated Circuits & Sensors
AcXel MEMS Optical Accelerometer



Spark Integration Technologies
Hardware Interface Module



Cubic Security Systems
Intelligent Container Lock



SPAWAR Software Support
SPIDER 4.2

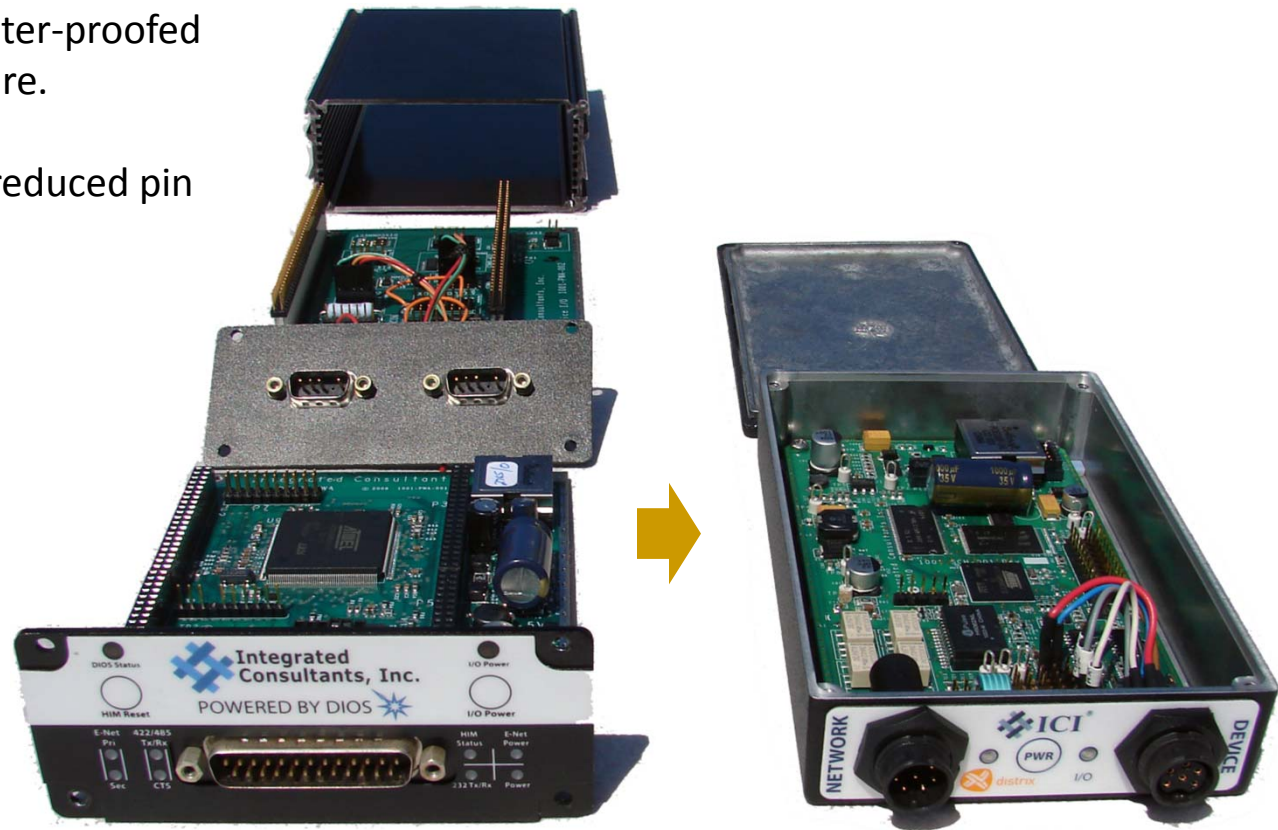


Hardware Integration Module (HIM) and Robots

Hardware Interoperability and Data Integration

ICI miniaturized and water-proofed electronics and enclosure.

- Smart Input/Output reduced pin count interface



Accelerometer

MEMS Optical Gyroscope Electronic Control Board

ICI designed electronic tooling to support and validate system resolution.

- Accelerometer
- Gyroscope



Retrotraverse

Payload Control and Power Accessories

ICI designed unique support system for digital and analog robot control.

- Remote Reset
- Auxiliary Power

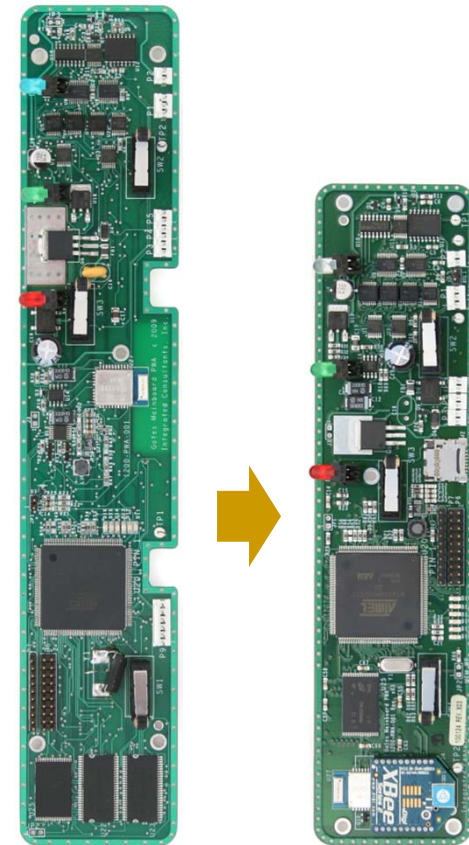


Intelligent Electronic Security Lock

Universal Container and Truck Body Electronics

ICI designed a unique pneumatic operation.

- Bluetooth, Zigbee and GPS Communication
- Single Charge, Multi-Year Functionality
- Ruggedized Mechanism With Miniaturized Electronics



FY 2010 Accomplishments

SPAWAR/PEO Integrated Data Environment and Repository (SPIDER)

Software & Hardware Support

ICI offered Information Technology support to SPAWAR's SPIDER program.
Prime contractor: Accenture Defense Group.

- System Administration
- Federal Information Security Management Act (FISMA) Compliance

