

Integrated Consultants, Inc.

Building F-6 Naval Base Point Loma, CA 92118, 619.884.8191

<http://www.integratedconsultants.com>

David K. Aberizk, President

Providing professional engineering services for 30 years



Delivering innovative Military Technology prototyping solutions

SPAWAR SSC-Pacific Prime (2014) IDIQ Contract N66001-09-D-0029

SEAPORT-e Prime (2013) Multiple Award Contract N66001-08-D-0074

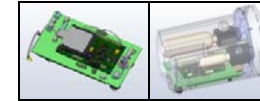
ICI Product Development Toolkit

- State-of-the-art design, finite element analysis, CAD/CAM
- Electronic rapid prototype assets
- Composite materials development cells
- Reverse and forensic engineering capabilities
- Sketch-to-prototype in-house capability

Subtractive (3D Mill)



Electronic Systems



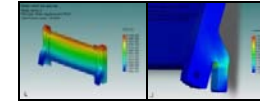
Renderings/Animations



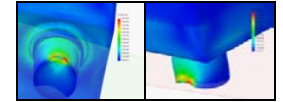
Additive (3D Printer)



Stress and Deformation



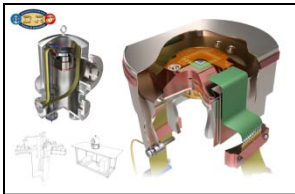
Simulation



ICI Satisfied Customers

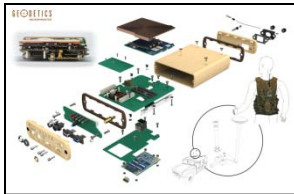
ONR

Cryopacking Primer



Geodetics

High Accuracy GPS



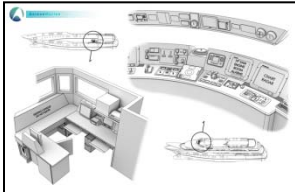
Spark Integration

Hardware Interface Module



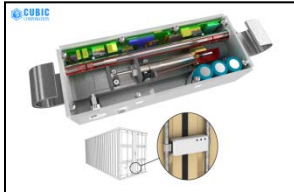
Aeron Marine

Custom Installs



Cubic

Gates Lock



Northrop Grumman

Firescout Interface



ICI Core Competencies

Producing concepts from requirements, delivering functional prototypes

- Electro/mechanical parametric 2D/3D design
- Finite element analysis, rendering and animation
- Routed system, harness/cable design
- PCB layout and design
- Document control, PDM/PLM, ERP/MRP
- Hardware/software integration
- Electrical integration and documentation
- Reverse engineering, laser scanning
- Rapid prototype 3D-printing, laser cutting
- R&D laboratory
- Green technology procedures

